

Q4 Technology Complex

Project: Q4 Technology Complex
Client: Scarbro Construction
Location: Smales Farm, North Shore, Auckland
Contract Value: \$1,000,000

Electrix completed the latest Smales Farm, building Q4 On The Boulevard in conjunction with Scarbro Construction. The project started out as a simple retail and office base build electrical contract, but turned into a substantial project, tripling in value and time.

At conception the building was intended to be the office park facilities building with a full height central atrium area, ground floor to be divided into retail units that would service the needs of the park office staff and levels 1 & 2 would become office space. Underground car park to be provided with additional un-secure external parking.

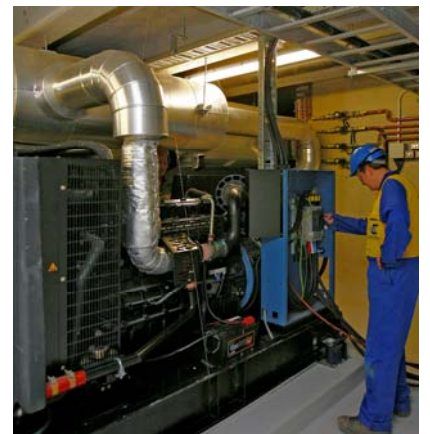
As the various spaces were let to tenants the architectural and services design evolved to suit, The atrium received a total redesign and the internal and external lighting design was altered. Sub mains and security for retail tenancies were added along with a new generator and switch board to support the office on Levels 1 & 2.

A gazebo, providing a multi purpose function space with a central stage area that could be used by the tenancies or the park management and additional car parks, exterior lighting, barrier arms and pay and display units were added throughout the park.

The external lighting was rationalised, as the park expanded each new building increased the external lighting requirements which meant the power and metering for these lights originating from multiple sources. Electrix in cooperation with the electrical consultants and the park management reviewed and implemented alterations to centralise the metering and power supplies from the new Q4 facilities building

Each year at Christmas Smales Farm runs a free charitable Laser show for the local community. Power requirements for this show were also centralised from the Q4 building. Among the changes required was the addition of an external montrose box containing a 400A feed for the Laser rig.

Electrix worked in close cooperation stake holders, Scarbro Construction, the electrical consultants, park management and various subcontractors to successfully implement significant changes to conclude a successful and very high class building.



Electrix Limited
2 George Bourke Drive,
Mt. Wellington
Auckland
PO Box 1688, Auckland
New Zealand
Phone: +64-9-270 1700
Fax: +64-9-270 1701